

st.Luke's



Pre-school

February 2018 Newsletter

Issue No.63

DEAR PARENTS & CARERS

We are now almost halfway through another busy & fun academic year! And still to come: the Spring play, more Creepy Claws, Dragon Boat Race and lots more. Thank you for your continued support.
Maria

WHAT WE DID LAST MONTH

held a tarantula, a skinny pig & a very hairy guinea pig, stroked a bearded dragon & milk snake & lots more creatures as Creepy Claws came to pre-school to show & tell about these amazing creatures; Evie & Amelia brought their our own pets into pre-school; continued to explore stories & rhymes (describing story setting, events & characters, joining in with repeated refrains) with 'The 3 Little Pigs', stories about owls & witches, & we cut out finger puppets, painted & glued pig & wolf masks, measured broomsticks ... made patterns in sand, made a giant puzzle, painted on cellophane, learned about patterns, similarities & differences ... & did lots of other fun things as well!



Creepy Claws

WHAT? WHERE? WHEN?

The 'Calendar' feature on our website @ www.stlukespre-school.co.uk is now activated; it has the 'Dates for your diary' & if you click on the event date, all the details (when, where and what) about the event!

This Months Phonetics
Weeks Commencing
5th Feb R & S
19th & 26th Feb T & U

Happy Birthday!!!
This Month
Harriet & Brooke
Are 3 & Adam is 4



Keep in touch!!!



VISIT OUR WEBSITE

WWW.STLUKESPRE-SCHOOL.CO.UK



FIND US ON FACEBOOK

ST LUKE'S PRE-SCHOOL (ROCHESTER)

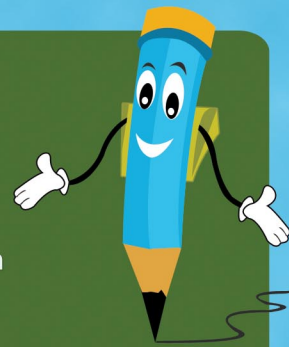


EMAIL US

OFFICE@STLUKESPRE-SCHOOL.CO.UK

DRAGON BOAT RACE

Have you signed up yet for the Dragon Boat race at Moat Park on Sunday 1st July? See the whiteboard in the corridor or a member of staff. You don't need to be a swimmer or athletic: just willing to get stuck in and have fun. Everyone is welcome to come and support too, bring a picnic and enjoy the atmosphere. Look out for our online donation page (please share with your friends and family via social media) as well as old fashioned paper sponsorship forms. All donations are gratefully received and go towards buying new equipment and supplies for the children at the pre-school.



TELL ME TREE

The sparkly, pink tree is in the lobby. Please add a leaf & tell us about your child's Wow! moment. These are read out at circle time. Children love sharing their news about a trip to the Natural History Museum, a family birthday ...



DATES FOR YOUR DIARY

Mon 12th - Fri 16th Feb - Half Term Break
Thurs 1st March - World Book Day
Tues 20th March - Spring Play Dress Rehearsal
Fri 23rd March - Sports Relief Day
Tues 27th March - Spring Play
Tues 19th June - Sports Day
Sun 1st July - Dragon Boat Race
Thurs 5th July - Outing to Kent Life



WORLD BOOK DAY

Takes place on Thursday 1st March & we would like to invite you to join us in helping your child to make the most of this special occasion. The children will have opportunity to dress up (free of charge) as their favourite book character on the day.

World Book Day celebrates the joy and value of books and reading, especially for children. To help get them started on their reading journey, your child will be receiving a £1 World Book Day Book Token that can either be exchanged for one of TEN special £1 World Book Day books or used to get £1 off any book costing £2.99 or more. For more information on the books and ideas associated with World Book Day, please visit www.worldbookday.com

Children are never too young to start their journey with books, and the benefits of reading are enormous, so we hope, like us, you will use World Book Day to celebrate it with your child.



VISIT OUR WEBSITE

WWW.STLUKESPRE-SCHOOL.CO.UK



FIND US ON FACEBOOK

ST LUKE'S PRE-SCHOOL (ROCHESTER)



Keep in touch!!!

EMAIL US

OFFICE@STLUKESPRE-SCHOOL.CO.UK

HELP STOP GERMS SPREADING

CATCH IT Germs spread easily. Always carry tissues and use them to catch your cough or sneeze.

BIN IT Germs can live for several hours on tissues. Dispose of your tissue as soon as possible.

KILL IT Hands can transfer germs to every surface you touch. Clean your hands as soon as you can.

PLEASE ENCOURAGE YOUR CHILD TO CARRY A TISSUE OR TEACH THEM TO CATCH THEIR COUGHS AND SNEEZES IN THEIR UPPER SLEEVE AND NOT THEIR HANDS.



LUNCHBOX RULES

Please ensure grapes & cocktail sausages are cut in half, as they can be a choking hazard in children under 5 & please no products containing nuts (INCLUDING NUTELLA, NAKD BARS, ETC) due to allergies: although your child may not be affected by nuts some of those that they interact with may be. You do not need to provide drinks for lunchtime as we supply drinks of milk or water.

To be healthy it's very important to eat a balanced diet: more details & some ideas about what to put in your child's lunchbox, in the booklets & boards in the lobby & @ www.nhs.uk/change4life website.

" TOO MUCH SALT CAN PUT OUR KIDS AT RISK OF HIGH BLOOD PRESSURE & HEART DISEASE LATER IN LIFE." ONE 25g PEPERAMI STICK CONTAINS ONE THIRD OF THE MAXIMUM DAILY AMOUNT OF SALT FOR A 4-6 YEAR OLD!

Join Change4Life to order your Change 4Life snack pack, with money-off vouchers for healthier snacks & stickers for your snack smart kids. Millions of families have already made healthier changes — you can, too!

QUICK REMINDERS

Please would parents take the opportunity, over the half-term break, to check that all their child's items brought in to pre-school (lunchbox, bag, coat & plimsolls) are clearly named. We seem to have a growing number of lost-property items which are unlabelled and therefore cannot be returned to their owners. Thank you for your cooperation in this.

Please would you place your child's shoes (once pegged) in either of the two hanging shoe racks & not on the corridor floor.

We are still collecting plastic milk bottle tops (for a future make) and stamps for a cancer charity



VISIT OUR WEBSITE

WWW.STLUKESPRE-SCHOOL.CO.UK



FIND US ON FACEBOOK

ST LUKE'S PRE-SCHOOL (ROCHESTER)



EMAIL US

OFFICE@STLUKESPRE-SCHOOL.CO.UK

Keep in touch!!!