

St. Luke's



Pre-school

January 2018 Newsletter  
Issue No.62

## DEAR PARENTS ....

Dear parents

Welcome back to a new year at St Luke's pre-school. I hope you all had an enjoyable festive period. The first 2 terms have flown by as always with so many highlights created by the children. Thank you also to the grown-ups who attended the Christmas play, bought raffle tickets, and donated prizes: your on-going support, is truly appreciated. And after Santa ... 'Creepy Claws'!

Maria



Nativity

## WE HAVE BEEN LEARNING ....

had lots of sparkly fun making Rudolph, wreaths, cards & table decorations, & tasty fun making Christmas cake; were amazed by a magician at our Christmas party and roared with laughter at his silly jokes; did our Christmas shopping & had breakfast with Santa; & amazed everyone with our performances in our nativity play.



Xmas Tag Day

## SHOW AND TELL EVERY FRIDAY ....

Every Friday is show and tell. Children are encouraged to bring in something (toy, book, photo ...anything) beginning with that week's phonic: 'O' for octopus

This Months Phonetics  
Week Commencing

4th & 8th Jan - N & O  
15th & 22nd Jan - P & Q  
29th Jan & 5th Feb - R & S

Happy Birthday!!!  
Felicity, Lottie &  
Lylah are 4  
Libby & Albert are 3

Keep in touch!!!



VISIT OUR WEBSITE

[WWW.STLUKESPRE-SCHOOL.CO.UK](http://WWW.STLUKESPRE-SCHOOL.CO.UK)



FIND US ON FACEBOOK

ST LUKE'S PRE-SCHOOL ( ROCHESTER )



EMAIL US

[OFFICE@STLUKESPRE-SCHOOL.CO.UK](mailto:OFFICE@STLUKESPRE-SCHOOL.CO.UK)

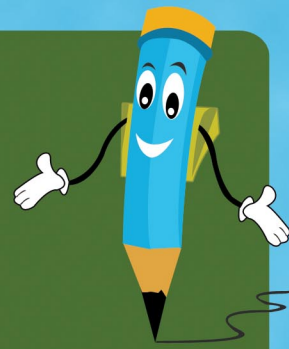
## URGENT REMINDER ....

Starting Primary School in Sept 2018?

If your child is born between 1 September 2013 and 31 August 2014, they are due to start school in Reception Year in September 2018.

School applications close Mon 15th Jan 2018, 5pm  
School offer day Mon 16th Apr 2018

We have a copies of Medway Council's 'Admissions' booklet on the counter in the lobby which may be borrowed.



## CHILDREN'S BELONGINGS ....

Please ensure children do not wear their best clothing to pre-school: painting overalls are provided but accidents can still happen. The pre-school has its own design of sweatshirts and t-shirts for sale.

Children should not bring sweets or wear jewellery to pre-school and they should not bring toys in except on Fridays for show and tell.

AND PLEASE, PLEASE, PLEASE write your child's name on their lunchbox, bag and coat.



Xmas Decs

1  
2  
3

## LUNCHBOX RULES ...

Please ensure grapes & cocktail sausages are cut in half, as they can be a choking hazard in children under 5 & please no products containing nuts (INCLUDING NUTELLA, NAKD BARS, ETC) due to allergies: although your child may not be affected by nuts some of those that they interact with may be.

You do not need to provide drinks for lunch-time as we supply drinks of milk or water.

To be healthy it's very important to eat a balanced diet: more details and some ideas about what to put in your child's lunchbox, in the booklets and boards in the lobby and @ Change4Life website

## DATES FOR YOUR DIARY

Monday 12th February to  
Friday 16th February  
HALF TERM BREAK

## TELL ME TREE ...

The tree is in the lobby. Please add a leaf & tell us about your child's Wow! moment. These are read out at circle time. Children love sharing their news about a trip to the Natural History Museum, a family birthday ...



VISIT OUR WEBSITE

[WWW.STLUKESPRE-SCHOOL.CO.UK](http://WWW.STLUKESPRE-SCHOOL.CO.UK)



FIND US ON FACEBOOK

ST LUKE'S PRE-SCHOOL ( ROCHESTER )



EMAIL US

[OFFICE@STLUKESPRE-SCHOOL.CO.UK](mailto:OFFICE@STLUKESPRE-SCHOOL.CO.UK)

**Keep in touch!!!**

## BAD WEATHER – POLICY ON PRE-SCHOOL OPENING ....

In the event of adverse weather, the pre-school will endeavour to remain open during normal school hours.

However, it will be left to the discretion of parents to decide if it is safe for them to make the journey into school or not.

If it is necessary to close the school, for health and safety reasons, a message will be posted on [www.kentschoolclosures.co.uk](http://www.kentschoolclosures.co.uk) from approximately 7am letting you know if the school is closed. Additionally you can: check on our website [www.stlukespre-school.co.uk](http://www.stlukespre-school.co.uk) check [www.bbc.co.uk/radiokent](http://www.bbc.co.uk/radiokent) (listen on 96.7 & 104.2FM) or [www.heart.co.uk/kent](http://www.heart.co.uk/kent) (listen on 103.1 & 104.2FM); telephone the pre-school on 01634 819809 (Mrs Perkin's will try or update the pre-school's telephone message if she can safely make it to pre-school); check on Facebook.



## CREEPY CLAWS ...

Starting next Thursday (for 10 weeks), 'Creepy Claws' (animal displays) will be coming in with a selection of small animals, suitable to be kept at home, with a few surprises. It promises to be a real treat for the children & we thank Mercer Group for the funding and Mimi ( Bertie's mum ) for applying to it.



Xmas Decs 2018

## WANTED ...

It would be appreciated if you could bring any old children's coats that you may have around for outside use, as the weather is so changeable at the moment and any contributions of fruit (apples, grapes etc), vegetables ... for the children at snack time.

## CAR PARK ENTRANCE ...

This is for cars. Please use the pedestrian entrance/path when walking or wheeling your child to & from pre-school.



VISIT OUR WEBSITE

[WWW.STLUKESPRE-SCHOOL.CO.UK](http://WWW.STLUKESPRE-SCHOOL.CO.UK)



FIND US ON FACEBOOK

ST LUKE'S PRE-SCHOOL ( ROCHESTER )



EMAIL US

[OFFICE@STLUKESPRE-SCHOOL.CO.UK](mailto:OFFICE@STLUKESPRE-SCHOOL.CO.UK)

**Keep in touch!!!**